



**AmericanAirFilter®**  
**SAAF™ Side Access Housings**  
**(SAAF:SAH)**

# SAAF™ Side Access Housings (SAAF:SAH)

## Multi-Stage Total Clean Air Systems

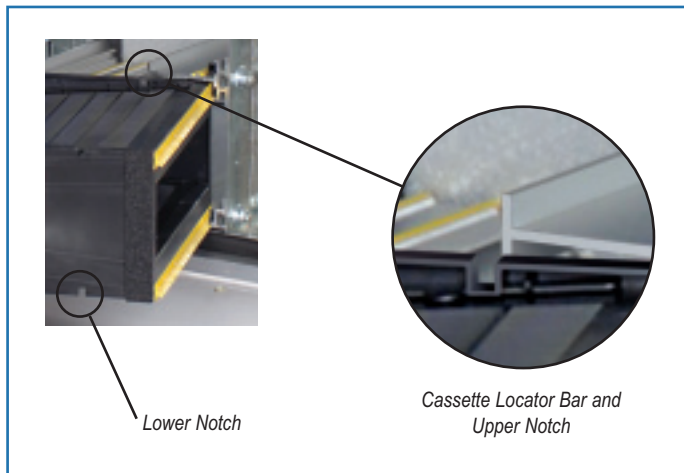
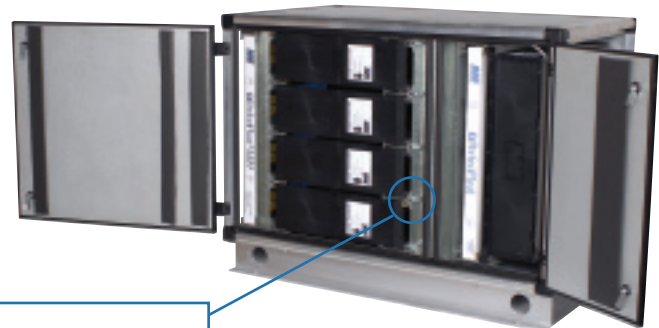
- Combines particulate filters, gas phase cassettes, and high efficiency filters to create total clean air solutions; removes both airborne particulate and gaseous contaminants
- Patent-pending SAAF™ Seal provides the best seal available and superior filtration efficiency
- Available with internal fan; wide range of sizes and combinations of housings and filter banks
- Insulated double-wall construction
- Allows easy installation, operation, and maintenance in a totally self-contained system



SAAF Side Access Housings (SAAF:SAH) are designed to support SAAF chemical media cassette filters, prefilters and after-filters, and high efficiency particulate filters all in one self-contained unit for the removal of gas contaminants and airborne particulate. The housings are available in many different combinations and sizes to meet a wide range of applications. SAAF:SAH is a state-of-the-art solution for total air cleaning.

### Sealing System Prevents Filter Bypass

AAF's patent-pending filter sealing system prevents bypass of unfiltered air. Cassettes and filters are locked in place by a combination of cassette notches and cassette locator bars. Designed to maintain optimal positioning of the cassettes, the locator bar compresses the cassette into the sealing gasket. This unique system is completely effective and ensures exceptional filter efficiency.

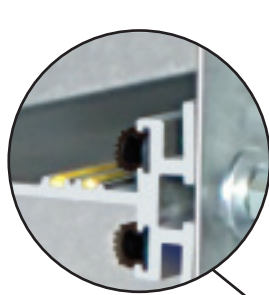


**Model SAH-202-2P-MD-2P-6F:**  
One of many available combinations, this housing accommodates one PerfectPleat® ULTRA 2" prefilter, four SAAF:MD cassettes, PerfectPleat® 2" after-filter, and VariCel® M-Pak high efficiency filter.

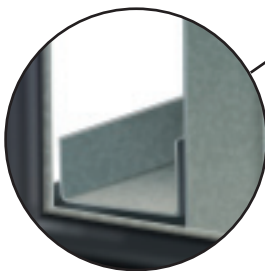
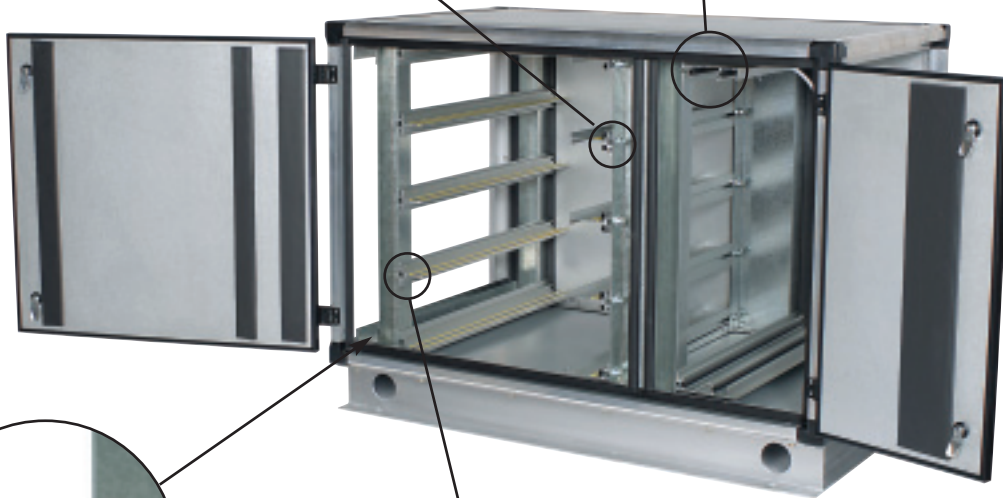
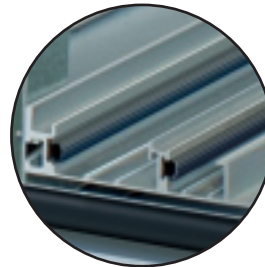
## Built for Strength

SAAF:SAH is constructed of heavy-duty industrial grade stainless steel, aluminum, painted steel, or corrosion resistant Galvalume® for maximum protection and durability. Ultra-modern double walled panels and doors provide whisper quiet operation. Each housing is leak tested and certified for energy efficiency.

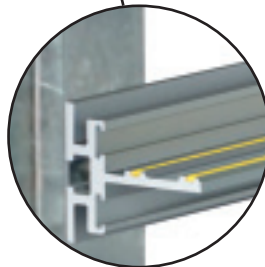
*AAF's track installation method provides trouble-free filter installations and changeouts. Precise connections between support tracks and the track support post ensure accurate filter spacing for superior efficiency.*



*After-filter and final filter tracks constructed of extruded aluminum and hold 2" after-filters and 6" deep high efficiency filters respectively.*



*2" Prefilter track*

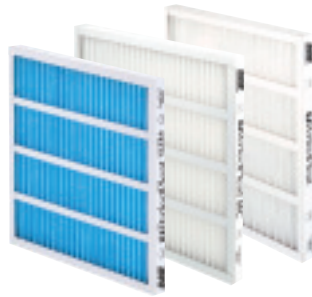


*The cassette support track (non-sealing face shown above) is constructed of extruded aluminum with plastic strips to reduce friction.*

## SAAF™ Side Access Housings (SAAF:SAH)

### Prefilters and After-filters

PerfectPleat ULTRA (MERV 8), PerfectPleat HC (MERV 7), and PerfectPleat (MERV 7) filters are ideal prefilters used to prevent the buildup of lint and dust on the face of the cassette and high efficiency filters.



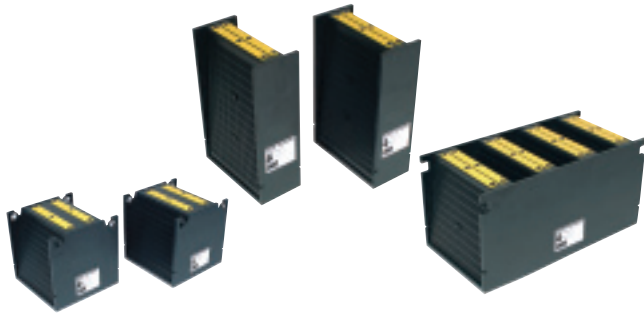
### High Efficiency Final Filters

SAAF:SAH will accommodate a high efficiency final filter bank to ensure that filtered air meets the highest levels of efficiency.



### Chemical Media Cassettes

SAAF:SAH is designed to hold SAAF chemical media cassette filters: Medium Duty (SAAF:MD), Heavy Duty (SAAF:HD) and Cleanroom Grade (SAAF:CG)



### Product Information

Model	Nominal Dimensions		Cassette Selection		
	H Ft	W Ft	SAAF:HD Airflow @ 250 FPM Velocity	SAAF:MD Airflow @ 500 FPM Velocity	SAAF:CG Airflow @ 500 FPM Velocity
102	1	2	500	1,000	1,000
104	1	4	1,000	2,000	2,000
202	2	2	1,000	2,000	2,000
204	2	4	2,000	4,000	4,000
206	2	6	3,000	6,000	6,000
302	3	2	1,500	3,000	3,000
304	3	4	3,000	6,000	6,000
306	3	6	4,500	9,000	9,000
402	4	2	2,000	4,000	4,000
404	4	4	4,000	8,000	8,000
406	4	6	6,000	12,000	12,000
408	4	8	8,000	16,000	16,000
410	4	10	10,000	20,000	20,000
504	5	4	5,000	10,000	10,000
506	5	6	7,500	15,000	15,000
508	5	8	10,000	20,000	20,000
510	5	10	12,500	25,000	25,000
604	6	4	6,000	12,000	12,000
606	6	6	9,000	18,000	18,000
608	6	8	12,000	24,000	24,000
610	6	10	15,000	30,000	30,000

### Product Model Designations

The SAAF:SAH model is designated as follows:

